

VEW-A: Automated Wash Water Recycling Systems

system design and consists of the following sub-systems:

- Oil Water Separator
- Solids filtration
- Effluent pumpout system
- AQAM polishing filter
- Master Control Panel (MCP) automatic controls

The VEW-A model can be used as a stand-alone treat and discharge to sewer design or when combined with the balance of the other VEW modules it becomes a full recycle/reuse system. The other modules needed for full recycle are:

- IFS Influent Feed System
- PSM Pressurized Supply Module
- EnBio treatment system
- Sludge Handling Filter
- Washpad & collection sump



VEW-A Equipment Detail				
Model	Flow Rate GPM	Operating Weight	AQAM Media	Voltage V/pH/Hz
VEW-2-A	5	805	180 lbs	115/1/60
VEW-4-A	10	2000	350 lbs	115/1/60
VEW-8-A	25	4020	900 lbs	115/1/60
VEW-12-A	35	4800	1500 lbs	230/3/60
VEW-16-A	50	6200	1850 lbs	230/3/60

VEW Options	
Model	
SF-2	Sludge filter, dual
ASV	Automatic sludge valve

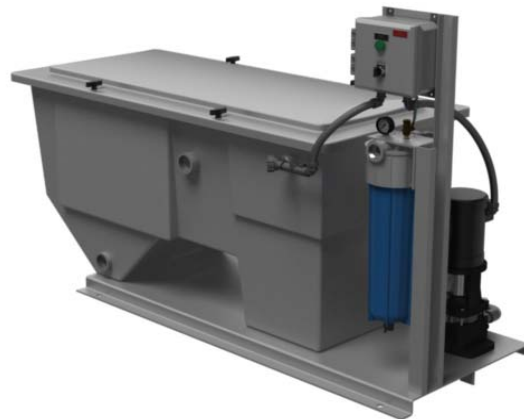
VEW: Automated Wash Water Treat and Discharge or Recycling Systems

The VEW treatment systems are the economical recycle or treat and discharge system design as dictated by the application and consists of the following sub-systems:

- Oil Water Separator
- Solids filtration
- Effluent pumpout system
- Master Control Panel (MCP) automatic controls

The VEW model can be used as a stand-alone treat and discharge to sewer design or when combined with the balance of the other VEW modules it becomes a recycle/reuse system. The other modules needed for full recycle are:

- IFS Influent Feed System
- PSM Pressurized Supply Module
- EnBio treatment system
- Sludge Handling Filter
- Washpad & collection sump



Larger flow rates up to 500 GPM available.

VEW Equipment Detail			
Model	Flow Rate GPM	Operating Weight	Voltage V/pH/Hz
VEW-2	5	805	115/1/60
VEW-4	10	2000	115/1/60
VEW-8	25	4020	115/1/60
VEW-12	35	4800	230/3/60
VEW-16	50	6200	230/3/60

The VEW systems are provided for flow rates 5-50 GPM in FRP construction and 50-300 GPM in steel construction.

Larger flow rates up to 300 GPM available.